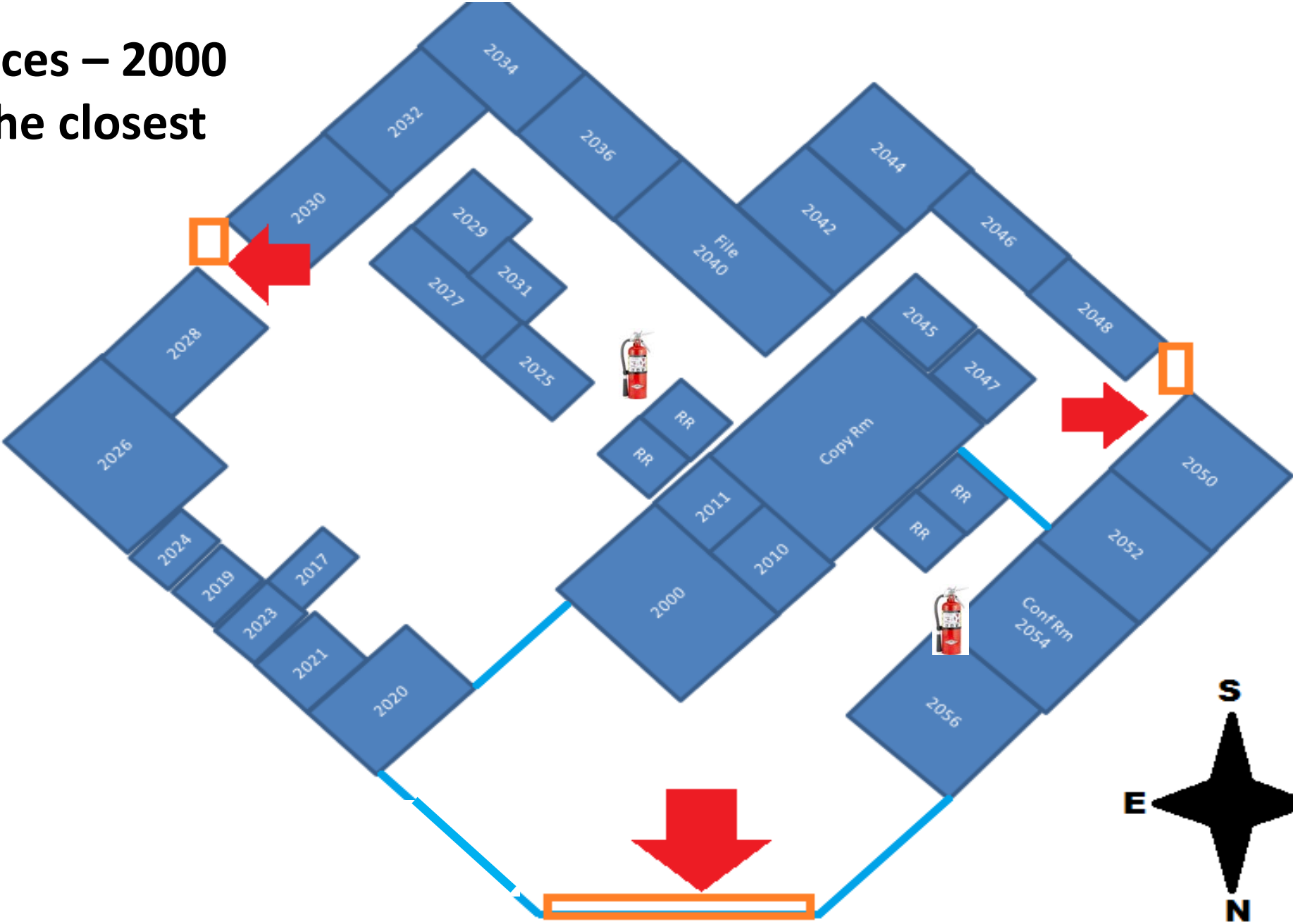


# Student Services – 2000

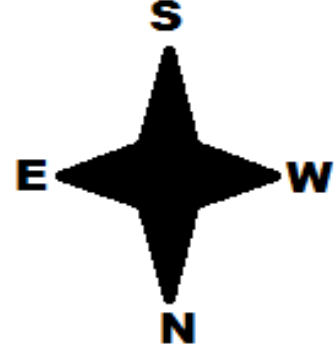
## Evacuate to the closest safe exit



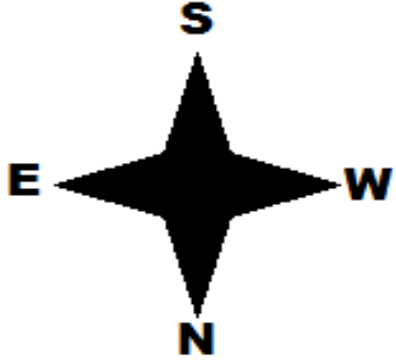
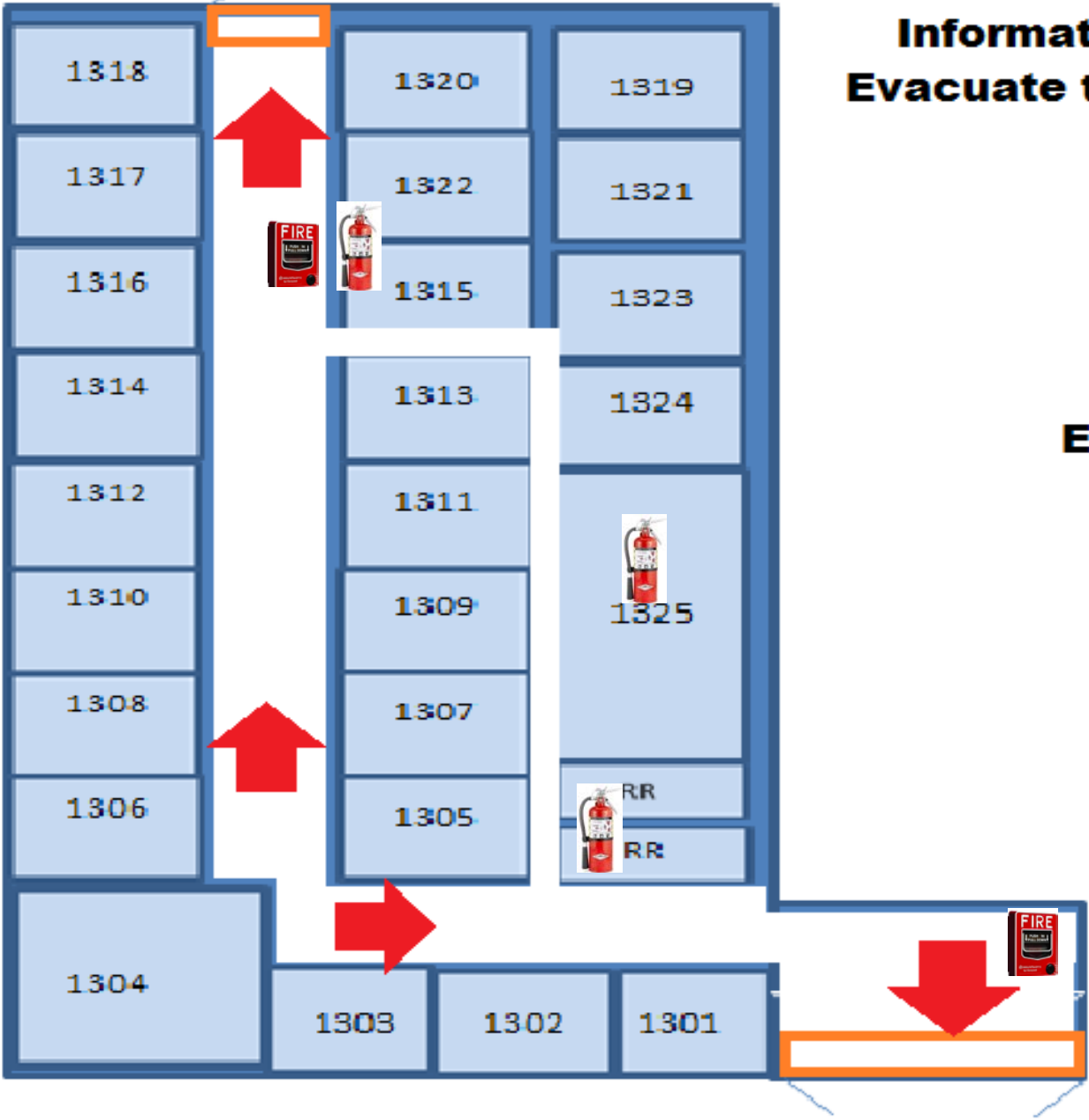
Icon Key

 Fire Extinguisher




 Doors/Exit

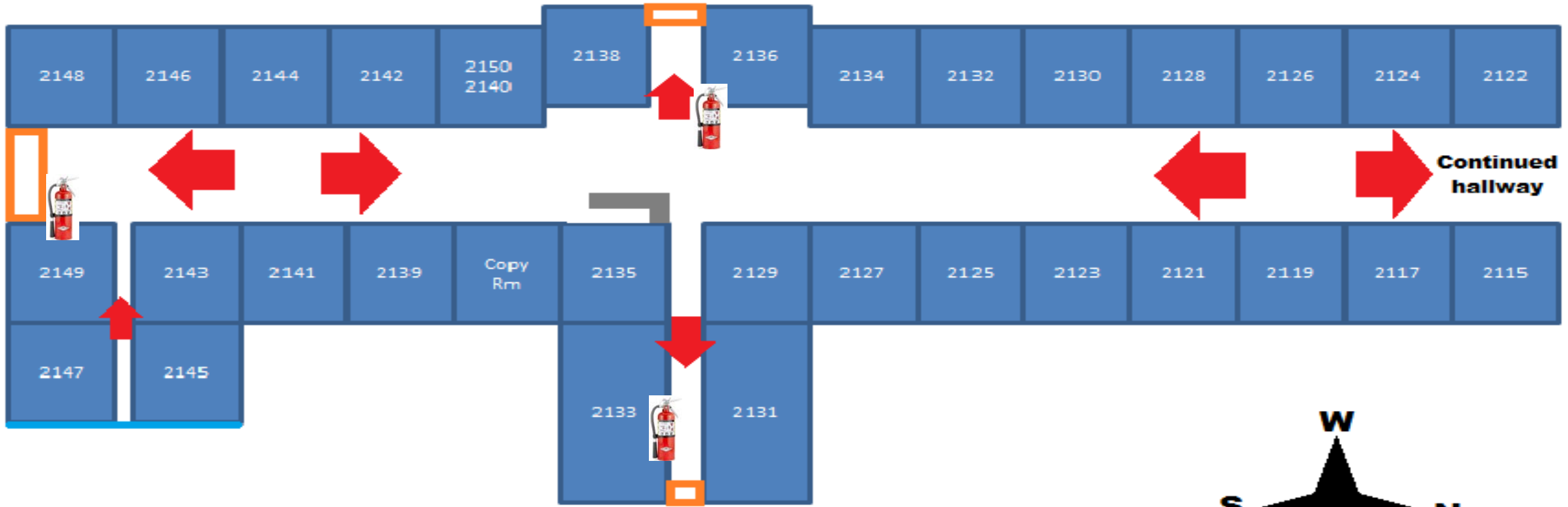


**Information Technology-1300**  
**Evacuate to the closest safe exit.**



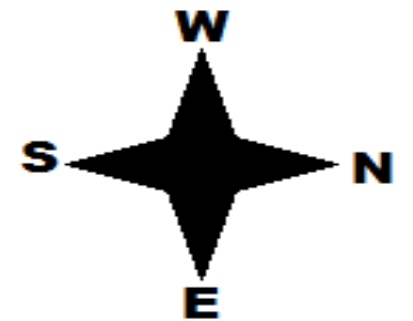
Icon Key

-  Fire Alarm Pull Station
-  Fire Extinguisher
-  Doors/Exit



S. Simkins - 2100

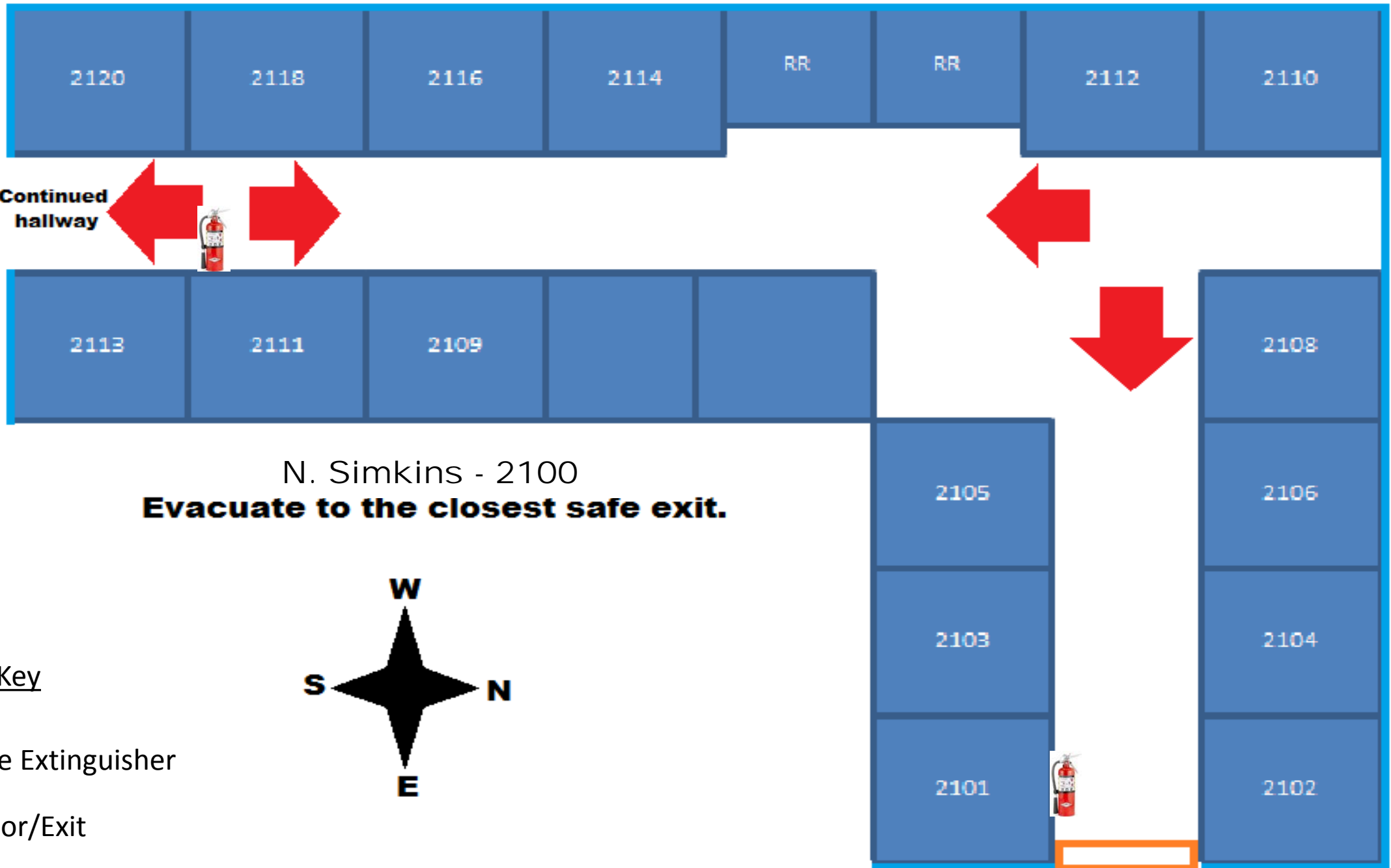
**Evacuate to the closest safe exit.**



Icon Key

 Fire Extinguisher

 Doors/Exit



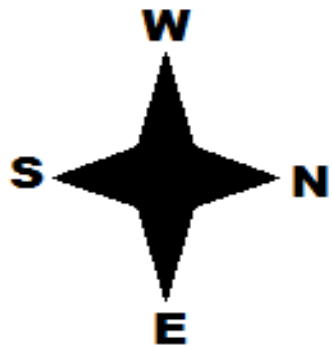
Icon Key

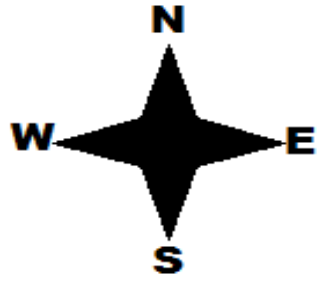


Fire Extinguisher



Door/Exit









# Kathleen Ross Center-3400

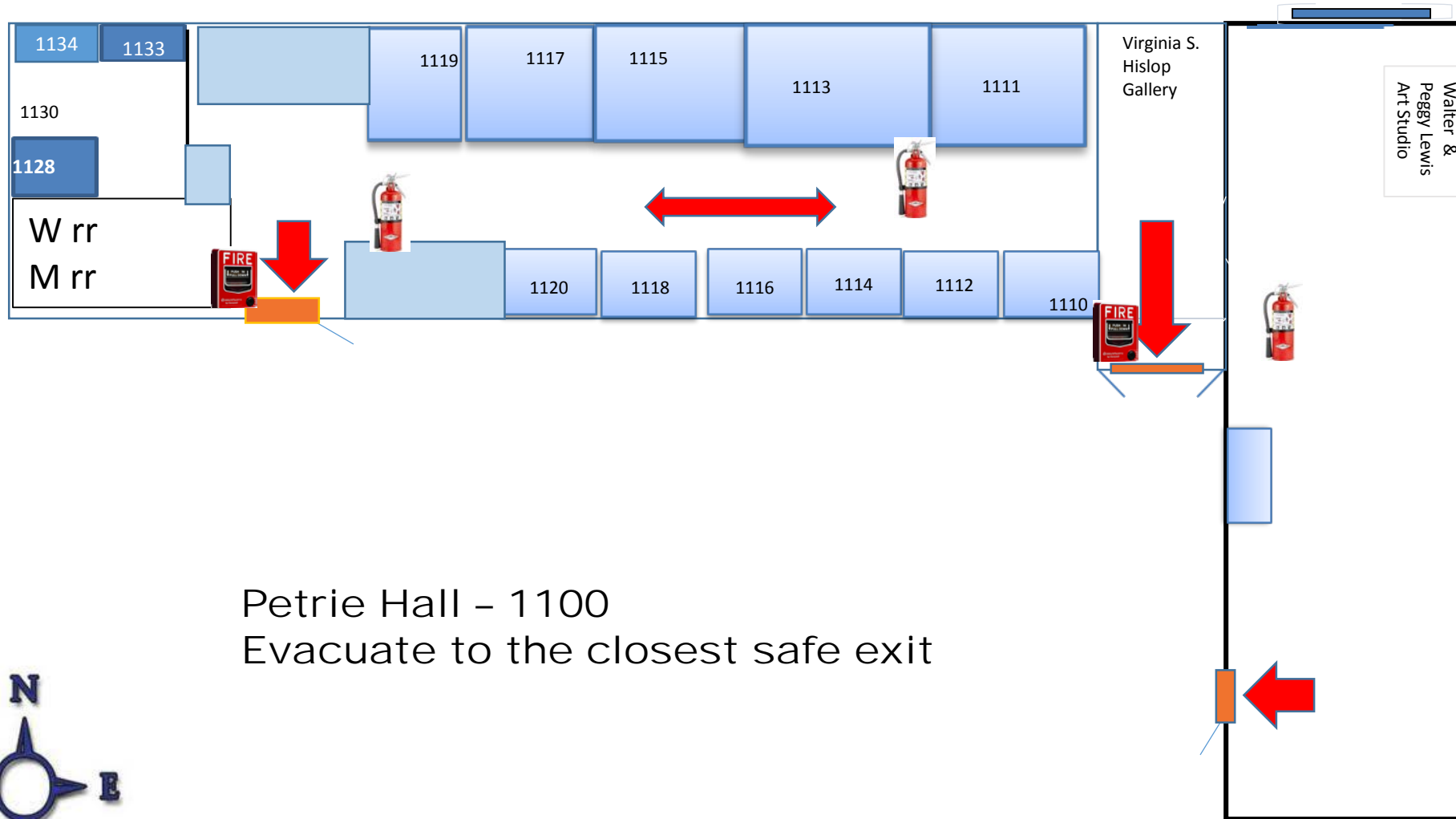
**Evacuate to the closest safe exit.**

5400

### Icon Key

-  Doors/Exit
-  A.E.D
-  Fire Alarm Pull Station
-  Fire Extinguisher





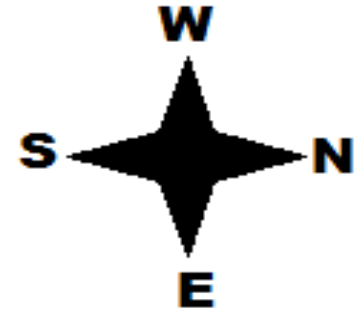
Petrie Hall - 1100  
 Evacuate to the closest safe exit



Icon Key


-  Door/Exit
-  Fire Extinguisher
-  Fire Alarm Pull Station

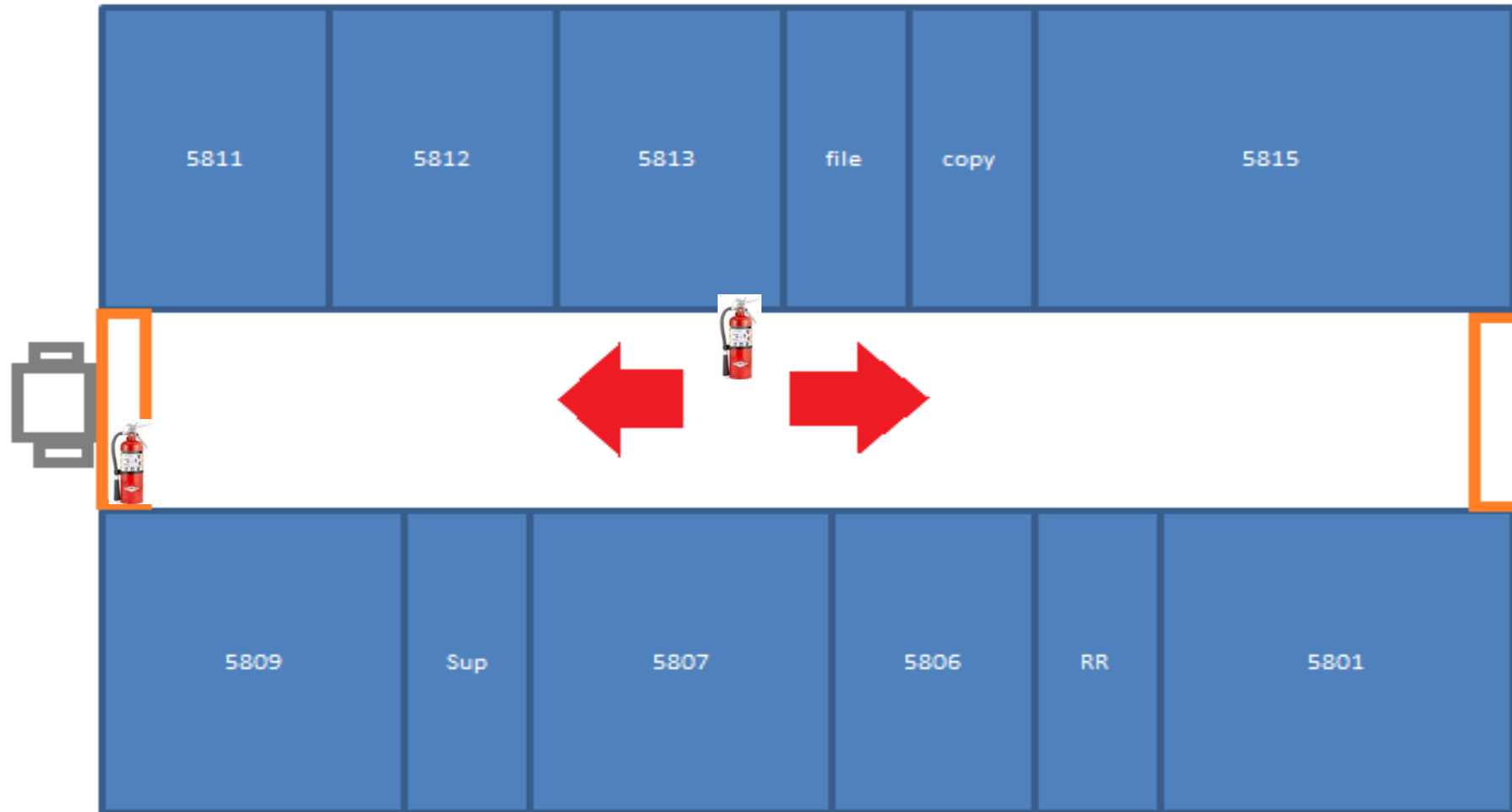
**Hitchcock- 5800**  
**Evacuate to the closest safe exit**



Icon Key

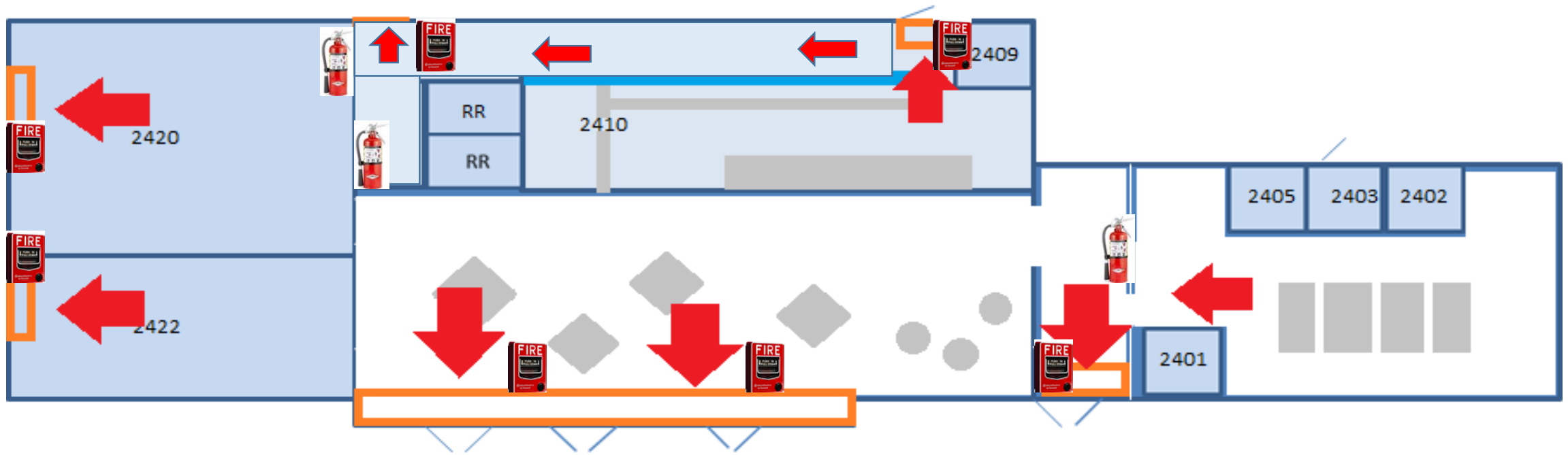
 Door/Exit

 Fire Extinguisher






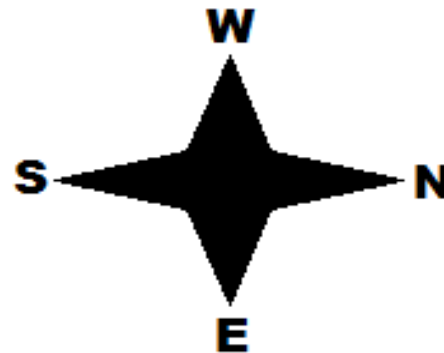
# The Dining Commons-2400

**Evacuate to the closest safe exit.**

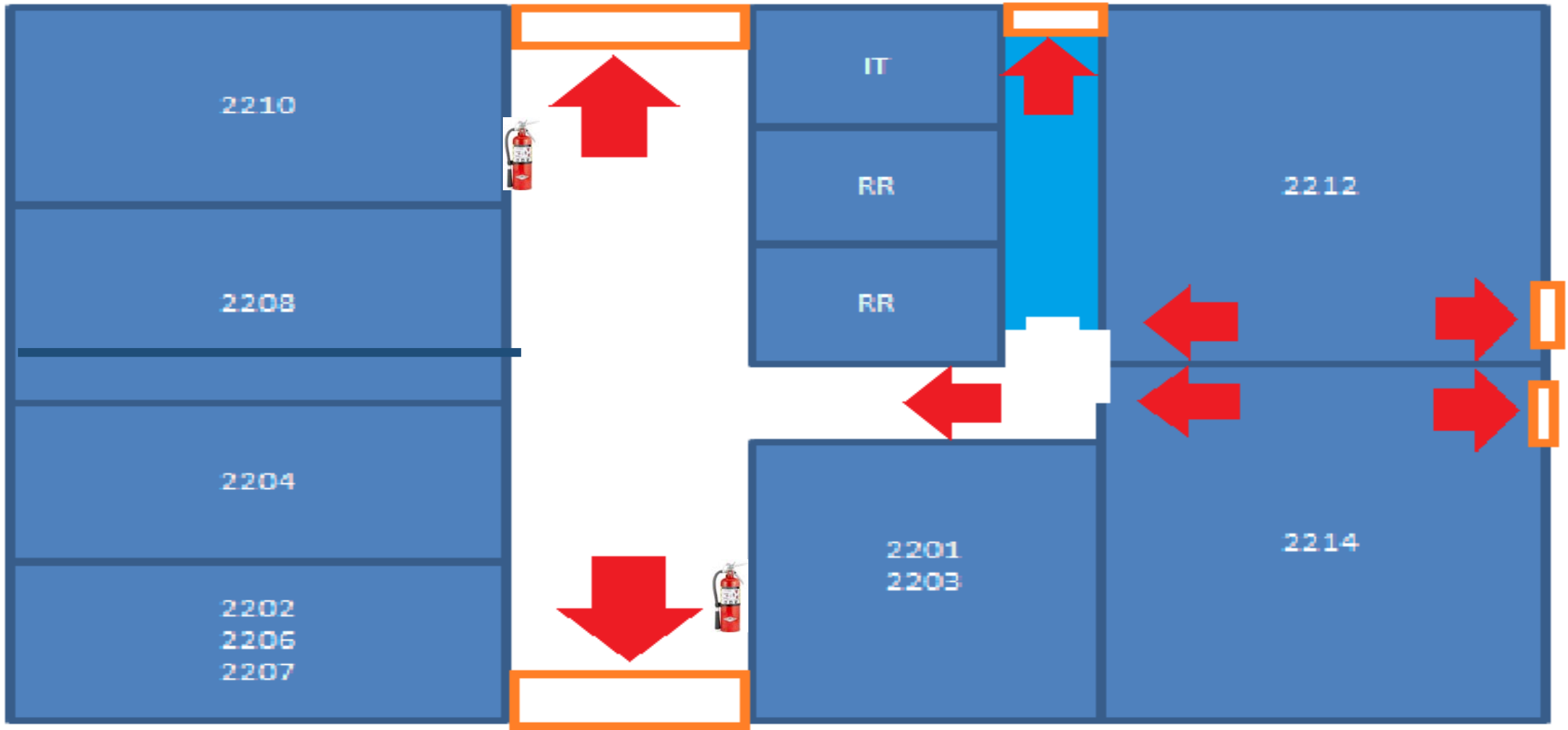


## Icon Key

-  Door/Exit
-  Fire Alarm Pull Station
-  Fire Extinguisher







Icon Key

 Door/Exit

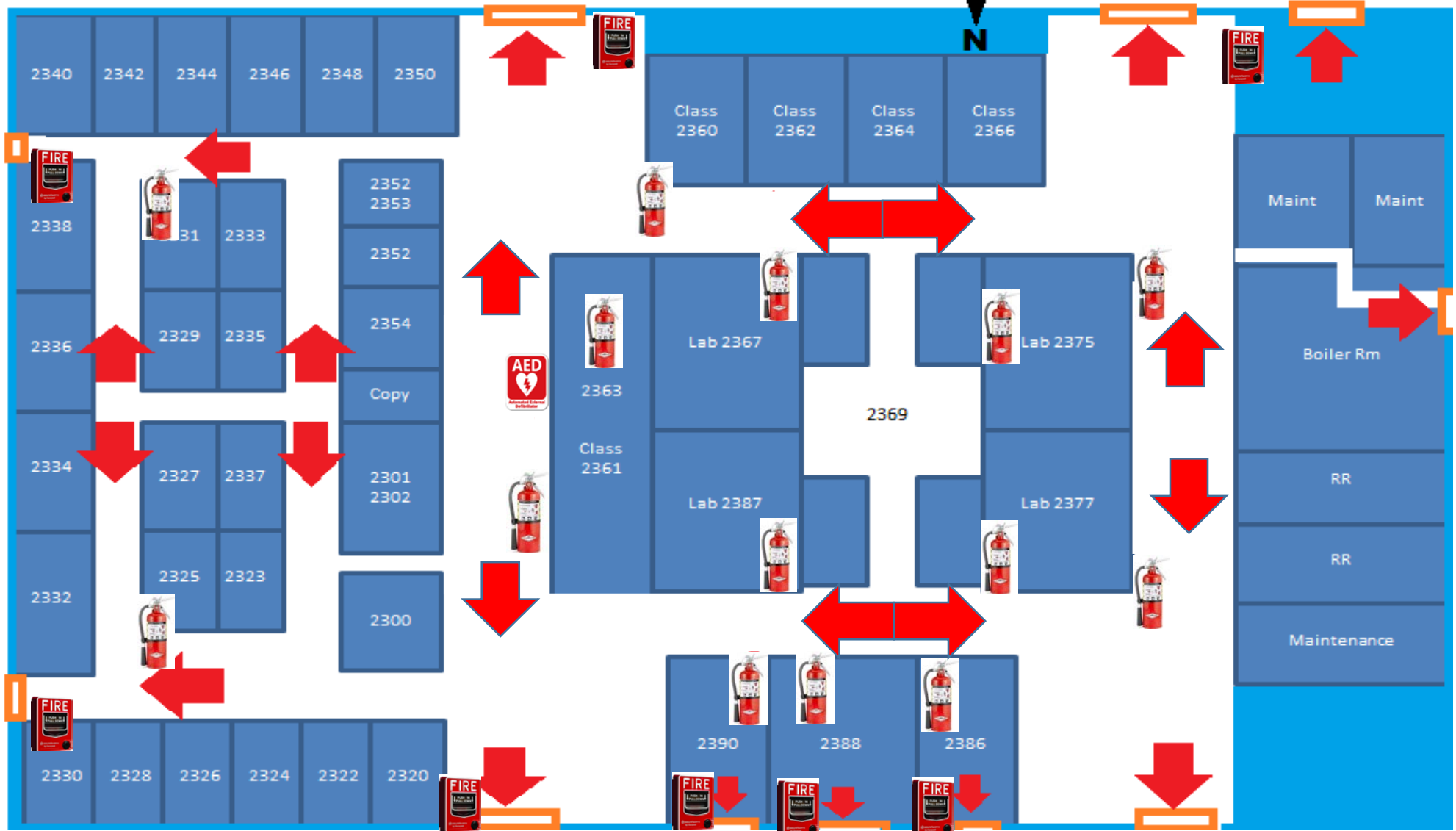
 Fire Extinguisher







**Community Business & Training Center-2200**  
**Evacuate to the closest safe exit.**

# Arts & Science-2300

**Evacuate to the closest safe exit. E S W**



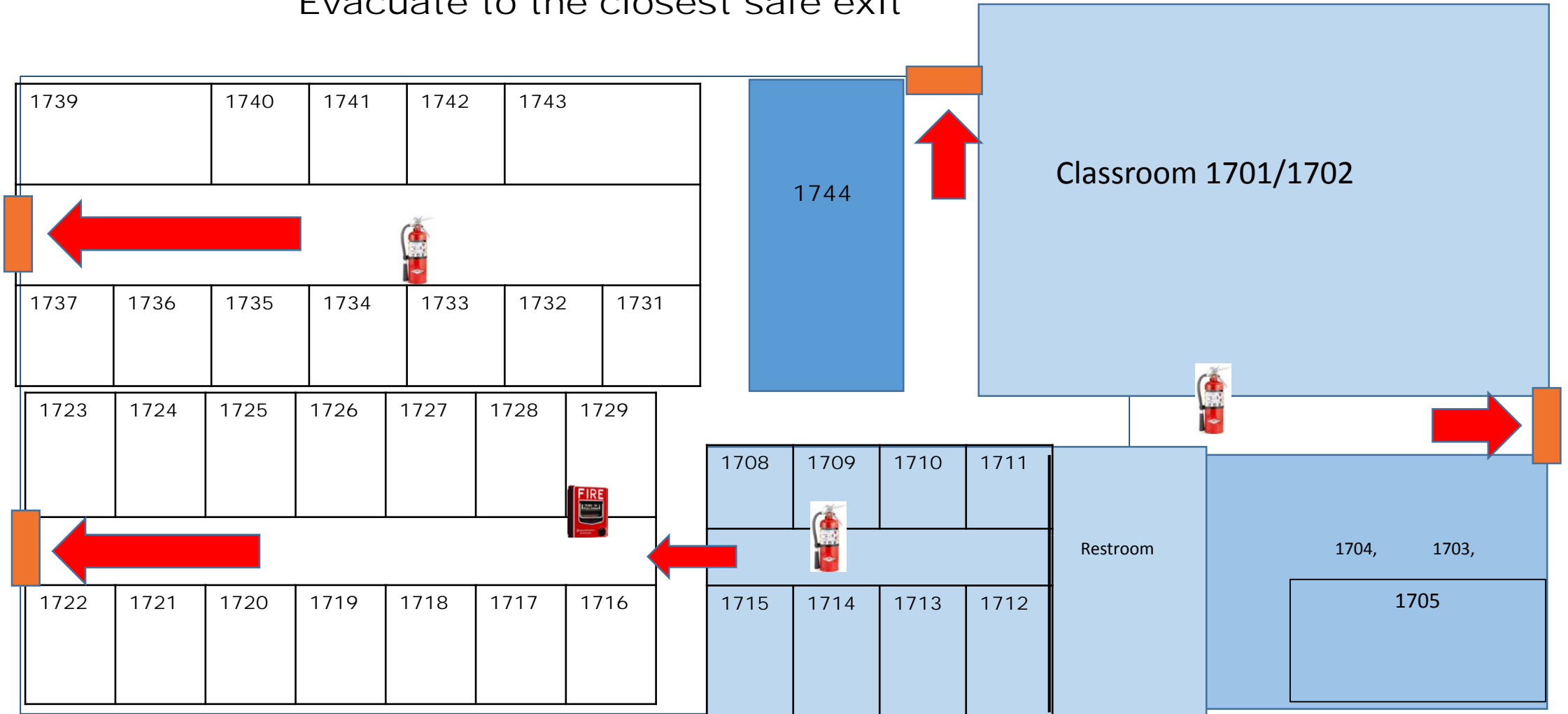
### Icon Key

-  Door/Exit
-  Fire Alarm Pull Station
-  Fire Extinguisher
-  A.E.D.



# Violet Lumley Rau Center – 1700

Evacuate to the closest safe exit



### Icon Key



Door/Exit




Fire Alarm Pull Station

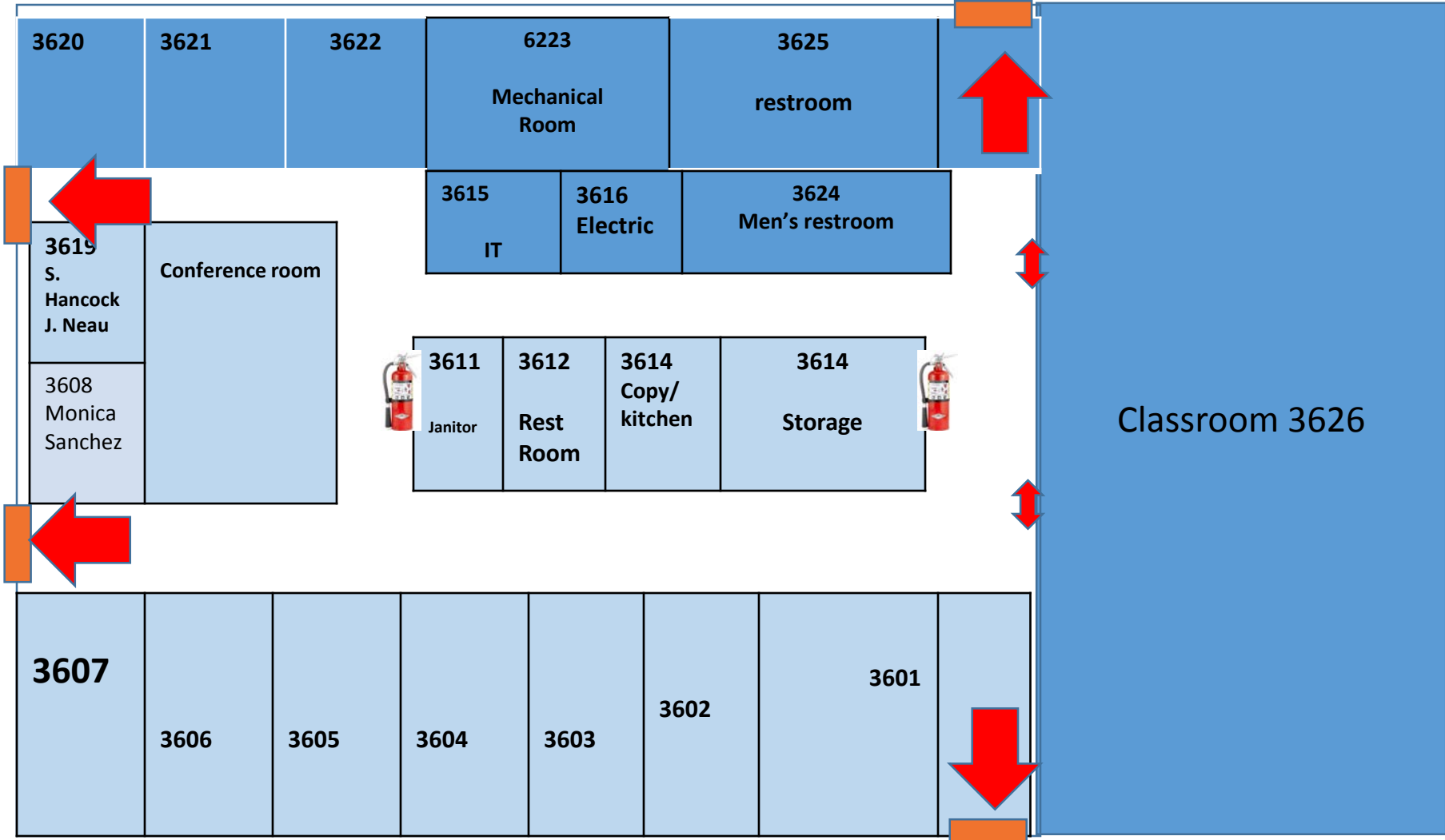


Fire Extinguisher

Icon Key

 Door/Exit

 Fire Extinguisher

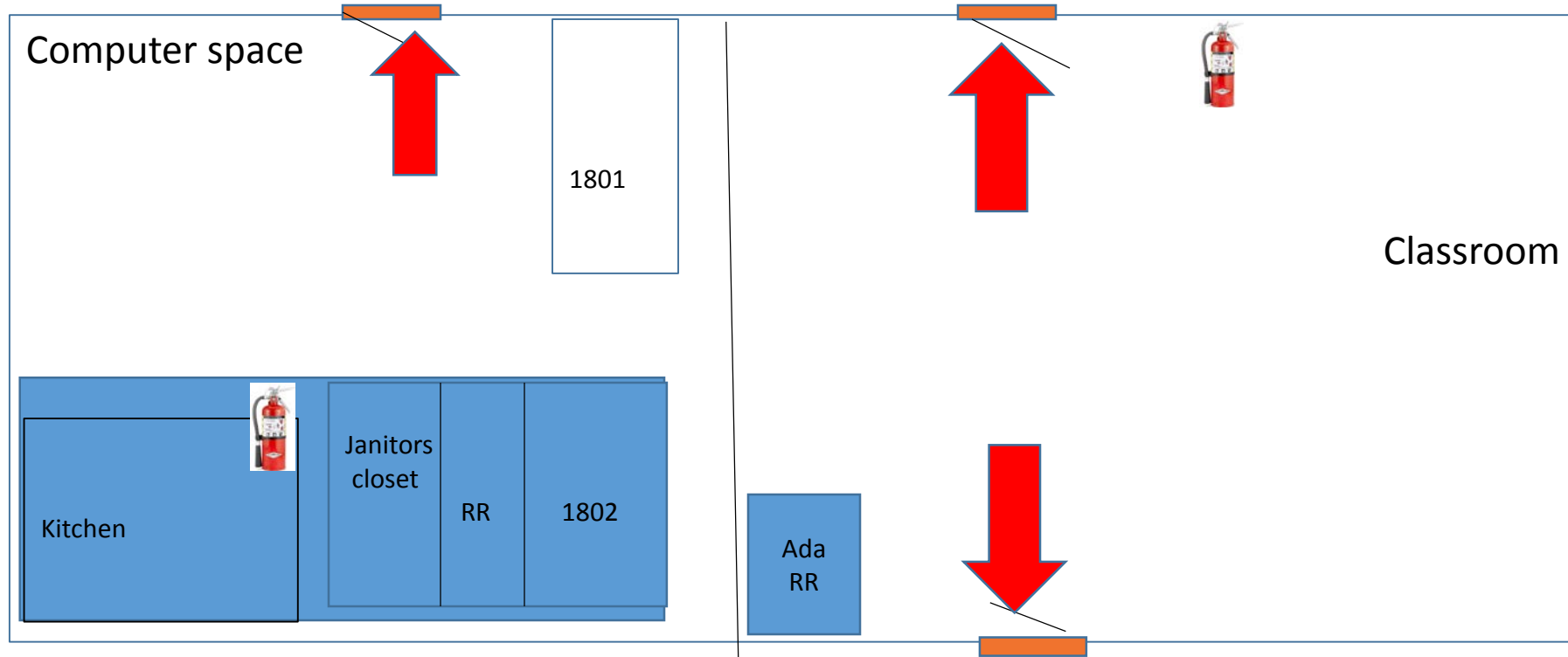


Martha B. Yallup - 3600  
Evacuate to the closest safe exit



# Harry Kent 1800

Evacuate to the closest exit

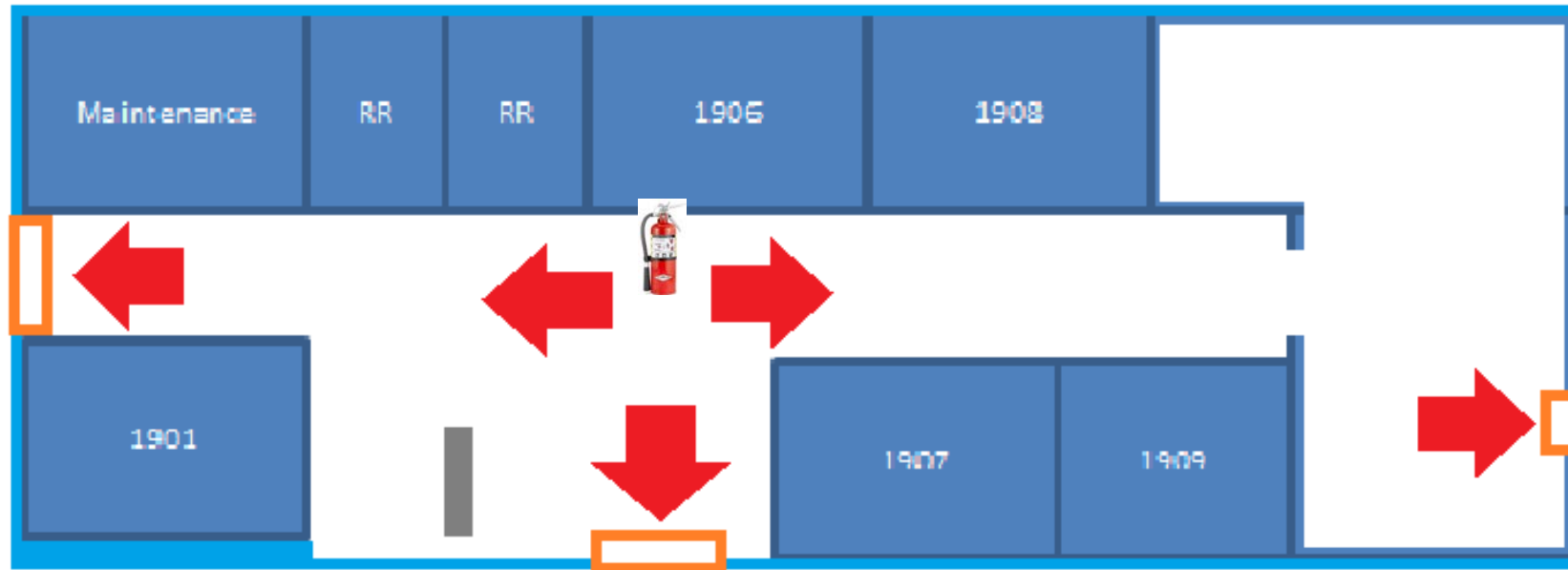


### Icon Key


 Door/Exit


 Fire Extinguisher

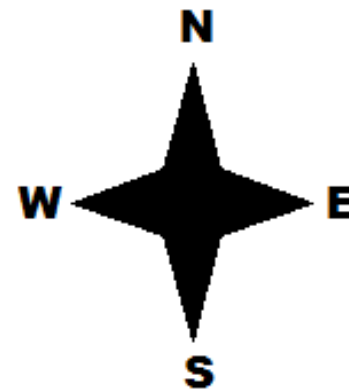
**U.W. GEAR UP-1900**  
**Evacuate to the closest safe exit.**



Icon Key

 Door/Exit

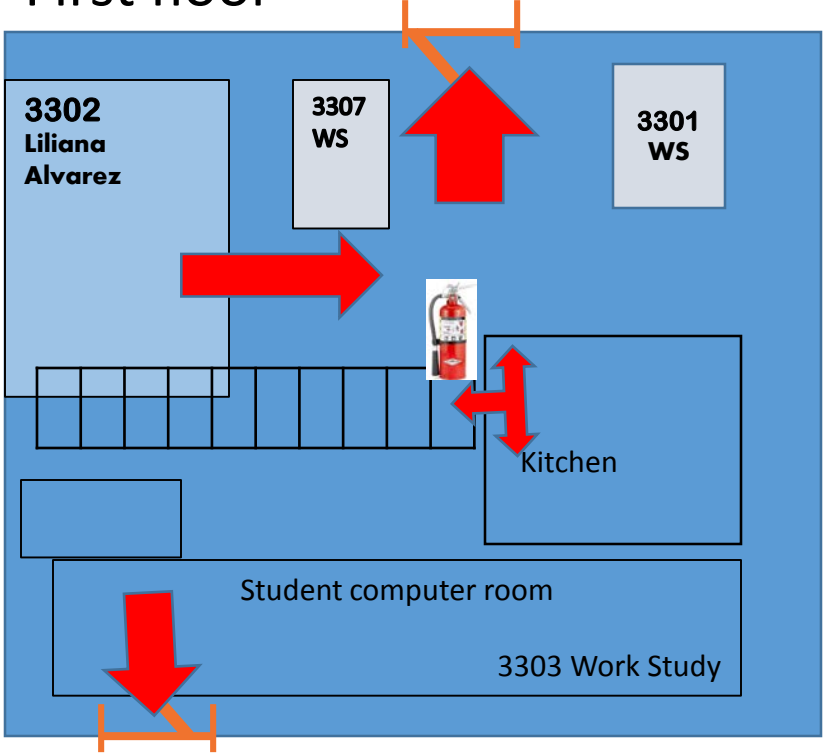
 Fire Extinguisher



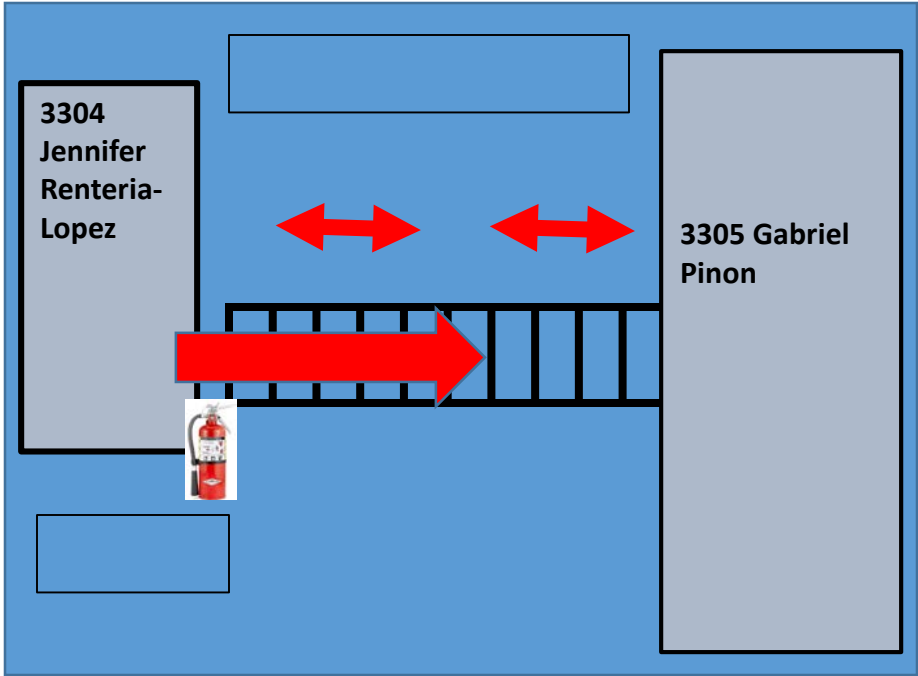
HEP House -3300  
Evacuate to the  
closest safe exit



First floor



Second Floor



Icon Key

Door/Exit



Fire Extinguisher